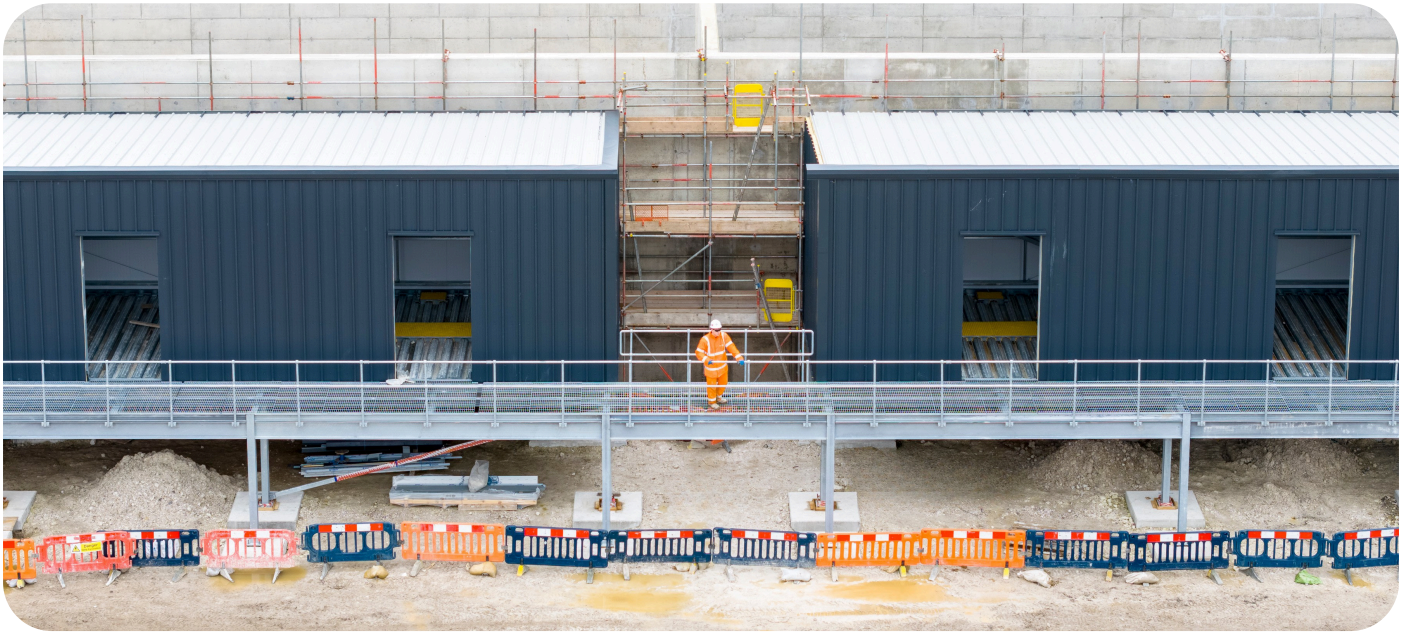




JSM GROUP SERVICES TRAINING BROCHURE



ABOUT US



JSM Group Services Ltd. are a leading provider of integrated utility infrastructure solutions. Our combination of end-to-end technical expertise, decades of industry experience, and unlimited fresh thinking make us a trusted partner for the implementation of next-generation connectivity in energy and communications. Our focus is on building for tomorrow by delivering every day for customers right across the UK, Europe and beyond.

Born in London in 1998, we are a founder-led organisation that have maintained a quiet and consistent focus on delivering excellent client outcomes. This ethos has served us well in the past and places us in an ideal position for continued growth today.

Our expert teams operate across the UK, Europe, and beyond, delivering cutting-edge solutions in power, gas, telecommunications and multi-utility infrastructure. We support a wide range of turnkey solutions with the design, build, and integration of critical infrastructure that enables growth, connectivity, and resilience.

Whether it's energising data centres, rolling out ultra-fast broadband, or integrating multiple utilities into a single, seamless project, we help our clients stay ahead of the curve as we collectively work towards net zero and a more sustainable future.

We are the trusted partner for developers, network operators, and public sector clients seeking reliable results delivered efficiently and to the highest standards.

>2000



**MVA POWER
CONNECTIONS**

99%



**WASTE
RECYCLED**

>3000KM



**FIBRE CABLE
INSTALLED**

OUR TRAINING CENTRE

Located in Barking, East London – with excellent transport links and off-road parking – JSM Group Services Training Centre offers a wide range of nationally accredited training programmes designed to meet the evolving needs of the construction and utilities sectors.

Our state-of-the-art facility includes a purpose-built Street Works Training Hangar, launched in 2023, which enables us to deliver fully accredited New Roads & Street Works Act (NRSWA) training in a safe, controlled, and weatherproof environment year-round.

We are proud to deliver training that is recognised by the following national awarding bodies:

- CITB – Construction Industry Training Board SMSTS, SSSTS, and Refreshers
- CABWI – New Roads and Street Works covering All Modules for Supervisor and Operatives including Hot lay
- NPORS – National Plant Operators Registration Scheme Excavators, Dumpers, Telehandlers etc
- Ladder Association – Ladder Safety Training Inspector and User
- Energy & Utility Skills – Sector-recognised qualifications and assessments All SHEA Core, Gas, Telecoms and Power + Water hygiene
- NUCO Training – EFAW 1 Day, First Aider 3 Days
- Sigma – Providing Driver CPC training

JSM Group Services is committed to excellence in training delivery. All our courses are delivered by experienced, qualified instructors and meet the highest standards set by their respective awarding bodies. This ensures that every candidate receives the knowledge, practical skills, and certification needed to work safely and competently within their job roles.

Whether you're an individual seeking to enhance your qualifications, or an employer looking to upskill your workforce, our tailored training solutions provide the foundation for long-term safety and professional success in the workplace.



HEALTH AND SAFETY AWARENESS (HSA)

● ● ● DURATION — 1 DAY

This Site Safety Plus course is for you if you're considering, or already, working within the construction and civil engineering industry.

This course highlights potential hazards when working on site and provides practical advice on keeping you and your colleagues safe. It covers your individual and employer's responsibilities, including what you can do if you think anyone's health and safety is being put at risk.

At the end of this course delegates will have an understanding of:

- The need to prevent accidents
- Health and safety law
- How your role fits into the control and management of site
- Risk assessment and method statements
- Performing safely and asking for advice
- How to report unsafe acts to prevent an accident

Certification from this course is valid for five years. To remain certified in this area delegates will need to retake the course before the expiry date.

Please note - Prices are reviewed every six months and group discounts are available, please contact us to discuss.



SITE SUPERVISION SAFETY TRAINING SCHEME (SSSTS)

● ● ● DURATION — 2 DAYS

This course is for you if you're considering, or already have, supervisory responsibilities.

At the end of this course delegates will have an understanding of:

- Health and safety law and how it applies to supervisors
- Your supervisory responsibilities in controlling site safely
- Risk assessment and the need for method statements
- Effective site inductions, toolbox talks and method statement briefings
- Monitoring site activities effectively
- Timely intervention when bad practice is identified

Certification from this course is valid for five years. To remain certified in this area delegates will need to retake the course before the expiry date.

Please note - Prices are reviewed every six months and group discounts are available, please contact us to discuss.



SITE SUPERVISION SAFETY TRAINING SCHEME REFRESHER (SSSTS-R)

● ● ● DURATION — 1 DAY

This course is for you if you have previously passed the Site Supervision Safety Training Scheme (SSSTS). This refresher brings your health and safety knowledge up to date, as well as giving you a thorough overview of the legislative changes and their impact in the workplace. It builds on the material in the original course.

At the end of this course delegates will have an understanding of:

- Implement all updated health, safety, welfare and environmental legislation affecting your supervisory role
- Implement new guidance and industry best practice affected by changes
- Fulfil your responsibilities regarding health, safety, welfare and the environment

Please note - Please note - Prices are reviewed every six months and group discounts are available, please contact us to discuss.



SITE MANAGEMENT SAFETY TRAINING SCHEME (SMSTS)

● ● ● DURATION — 5 DAYS

This course is for you if you're considering, or already have, responsibilities for planning, organising, monitoring, controlling and administering groups of staff e.g. site manager. It covers all relevant legislation affecting safe working in the building, construction and civil engineering industries. It highlights the need for risk assessment in the workplace, the implementation of the necessary control measures and adequate communication to sustain a health and safety culture within the workforce.

At the end of this course delegates will have an understanding of:

- Implement all health, safety, welfare and environmental legislation affecting your daily work
- Implement new guidance and industry best practice
- State your duties and responsibilities with regards to health, safety, welfare and the environment

Certification from this course is valid for five years. To remain certified in this area delegates will need to retake the course before the expiry date.

Please note - Prices are reviewed every six months and group discounts are available, please contact us to discuss.



SITE MANAGEMENT SAFETY TRAINING SCHEME REFRESHER (SMSTS-R)

● ● ● DURATION — 2 DAYS

This course is for you if you have previously passed the Site Management Safety Training Scheme (SMSTS) course, or a subsequent refresher course.

At the end of this course delegates will have an understanding of:

- Implement all updated health, safety, welfare and environmental legislation affecting your daily work
- Implement new guidance and industry best practice
- Fulfil your duties and responsibilities with regards to health, safety, welfare and the environment

Certification from this course is valid for five years. To remain certified in this area delegates will need to retake the course before the expiry date.

Please note - Please note - Prices are reviewed every six months and group discounts are available, please contact us to discuss.



NEW ROADS & STREETWORKS (NRSWA) FOR OPERATIVES



● ● ● **DURATION — 5 DAYS (LA-05+08 / LA-06+08)**

This NRSWA training course provides delegates with the skills and knowledge to perform operative duties in accordance with standards and approved Codes of Practice in-line with the current NRSWA 1991, to safeguard themselves and others.

The units covered in this course are;

- LA – Locate and avoid danger from underground services
- SLG – Signing, Lighting, and Guarding
- O2 – Excavation in Highway
- O3 – Reinstatement of compaction and backfill materials
- O4 – Reinstatement of sub-base and road base nonbituminous materials
- O5 – Reinstatement of cold-lay bituminous materials
- O6 – Reinstatement of hot-lay bituminous materials
- O8 – Reinstatement of modular surfaces and concrete surfaces

Upon completion, delegates will be able to summarise the requirements of NRSWA, selecting the appropriate personal protective and safety equipment to complete works and perform the duties of each unit. This includes site set-up, excavation, service identification and reinstatement.

This course is made up of classroom and practical learning, followed by an exam per unit, supplemented throughout with theory-based presentations and videos.

A training group may contain both Operatives and Supervisors to allow the most effective development of candidates.

Please note - All books and handouts are the property of JSM, online copies can be downloaded for free via www.jsmgroupp.com.

Knowledge will be gained on Risk Assessment Methods (RAMS), safety procedures and various legislation. Books and Handouts will be provided throughout the course including;

- | | |
|---|--------------------------------|
| ● HSG47 | ● The Specifications for the |
| ● Safety at Street Works and Road | ● Reinstatement of Openings in |
| ● Works A Code Of Practice | ● Highways |
| ● Guidance on the use of portable traffic signals | ● HSG150 |
| ● Street works UK guidance documents | |

NEW ROADS & STREETWORKS (NRSWA) FOR SUPERVISORS



● ● ● DURATION — 5 DAYS (LA-S5+S7)

This NRSWA training course provides delegates with the skills and knowledge to perform supervisor duties in accordance with standards and approved Codes of Practice in-line with the current NRSWA 1991, to safeguard themselves and others.

The units covered in this course are;

- LA – Location and avoidance of underground apparatus
- SLG – Monitoring signing, lighting, and guarding
- S2 – Monitoring excavation in the highway
- S3 – Monitoring reinstatement of compaction and backfill materials
- S4 – Monitoring reinstatement of sub-base and road base non-bituminous materials
- S5 – Monitoring reinstatement of bituminous materials
- S7 – Monitoring reinstatement of modular surfaces and concrete footways

Upon completion, delegates will be able to summarise the requirements of NRSWA, selecting the appropriate personal protective and safety equipment to complete works and perform the duties of each unit. This includes monitoring both site and operatives during site set-up, excavation, service identification and reinstatement.

This course is made up of classroom and practical learning, followed by an exam per unit, supplemented throughout with theory-based presentations and videos.

A training group may contain both Operatives and Supervisors to allow the most effective development of candidates.

Please note - All books and handouts are the property of JSM, online copies can be downloaded for free via www.jsmgroupp.com.

Knowledge will be gained on Risk Assessment Methods (RAMS), safety procedures and various legislation. Books and Handouts will be provided throughout the course including;

- HSG47
- Safety at Street Works and Road
- Works A Code Of Practice
- Guidance on the use of portable traffic signals
- Street works UK guidance documents.
- The Specifications for the Reinstatement of Openings in Highways
- HSG150

REFRESHER: NEW ROADS AND STREETWORKS (NRSWA)



● ● ● DURATION — 2 DAYS (LA-O6+O8) (LA, S1-S5+S7)

This NRSWA training course refreshes delegates skills and knowledge to perform duties in accordance with standards and approved Codes of Practice in-line with the current NRSWA 1991, to safeguard themselves and others.

The units covered in this course are;

- LA – Locate and avoid danger from underground services
- SLG – Signing, Lighting, and Guarding
- O2 – Excavation in Highway
- O3 – Reinstatement of compaction and backfill materials
- O4 – Reinstatement of sub-base and road base nonbituminous materials
- O5 – Reinstatement of cold-lay bituminous materials
- O6 – Reinstatement of hot-lay bituminous materials
- O8 – Reinstatement of modular surfaces and concrete surfaces

The units covered in this course are;

- LA – Location and avoidance of underground apparatus
- SLG – Monitoring signing, lighting, and guarding
- S2 – Monitoring excavation in the highway
- S3 – Monitoring reinstatement of compaction and backfill materials
- S4 – Monitoring reinstatement of sub-base and road base non-bituminous materials
- S5 – Monitoring reinstatement of bituminous materials
- S7 – Monitoring reinstatement of modular surfaces and concrete footways

We will require the following information before booking:

- Full Name
- Address
- Date of Birth
- NRSWA Units the candidate wishes to renew

Delegates should inform their trainer if they have any serious health issues, physical problems, special considerations or are taking any medication which may create difficulties in undertaking training.

Delegates need to provide a passport photograph and on the day of training for production of SWQR Cards as well as Photo ID. (SWQR card, passport or driving licence accepted).

Please note - All books and handouts are the property of JSM, online copies can be downloaded for free via www.jsmgroupp.com.

SIGNING, LIGHTING & GUARDING



● ● ● DURATION — 1 DAY (O1 / S1)

Our Signing, Lighting and Guarding (SLG) training aims is to provide Operatives and Supervisors with the skills and knowledge to perform their respective duties when setting out signing, lighting, and guarding to the standards prescribed in-line with the NRSWA 1991, to safeguard themselves and others.

Objectives for operatives;

- Understand the basic principles & standards of NRSWA
- Identify and implement correct traffic control measures
- Erect and dismantle SLG in line with the Code of Practice
- Correctly and confidently operate equipment

Objectives for supervisors;

- Understand the basic principles & standards of NRSWA
- Identify and implement correct traffic control measures
- Monitor site set-up in line with SLG Code of Practice
- Ensure safe working practices in the road / highway

This course is made up of classroom and practical learning, followed by an exam per unit, supplemented throughout with theory-based presentations and videos. Supervisors will be assessed on their monitoring of operatives in exercises.

Operatives will be made available for Supervisor assessments to allow the most effective development of candidates.

A Street Works Qualification Card will be issued upon completion in accordance with the SWQR. These are valid for an initial period of 5 years. Supervisors and operatives are required to be reassessed every 5 years for reregistration on the SWQR.

Delegates will be required to bring their own PPE and a passport standard photo which will be issued to their cards.

Delegates should inform their trainer if they have any serious health issues, physical problems, special considerations or are taking any medication, which may create difficulties in undertaking elements of

Please note - All books and handouts are the property of JSM, online copies can be downloaded for free via www.jsmgroupp.com.

EUSR SHEA TELECOMMUNICATIONS



● ● ● **DURATION — 1 DAY AVAILABLE IN-PERSON OR VIA REMOTE LEARNING**

Our SHEA Telecommunications scheme is designed for individuals who require access to operational sites within the telecommunications industry, both permanent and temporary,

Partnered with Construction Skills Certification Scheme (CSCS), our course comprises of seven modules including utility specific, health, safety, and environmental law and telecommunication specific content.

Designed to provide knowledge, understanding and behavioural awareness, individuals must complete all seven modules and pass the assessment to gain EUSR SHEA Telecommunications registration.

EUSR SHEA WATER



● ● ● **DURATION — 1 DAY AVAILABLE IN-PERSON OR VIA REMOTE LEARNING**

Our SHEA Water scheme is designed for individuals who require access to operational sites within the water industry, both permanent and temporary,

Partnered with Construction Skills Certification Scheme (CSCS), our course comprises of eight modules including utility specific, health, safety, and environmental law and water specific content.

Designed to provide knowledge, understanding and behavioural awareness, individuals must complete all eight modules and pass the assessment to gain EUSR SHEA Water registration.

PLEASE NOTE - All EUSR SHEA training courses are an Energy & Utility Skills Passport scheme that does not indicate any level of technical competence or skilled expertise. All courses are appropriate for operatives, supervisors & managers.

Please note - Prices are reviewed every six months and group discounts are available, please contact us to discuss.

EUSR SHEA POWER



● ● ● **DURATION — 1 DAY AVAILABLE IN-PERSON OR VIA REMOTE LEARNING**

Our SHEA Power scheme is designed for individuals who require access to operational sites within the power industry, both permanent and temporary,

Partnered with Construction Skills Certification Scheme (CSCS), our course comprises of eight modules including utility specific, health, safety, and environmental law and power specific content.

Designed to provide knowledge, understanding and behavioural awareness, individuals must complete all eight modules and pass the assessment to gain EUSR SHEA Power registration.

EUSR SHEA GAS



● ● ● **DURATION — 1 DAY AVAILABLE IN-PERSON OR VIA REMOTE LEARNING**

Our SHEA Gas scheme is designed for individuals who require access to operational sites within the gas industry, both permanent and temporary,

Partnered with Construction Skills Certification Scheme (CSCS), our course comprises of nine modules including utility specific, health, safety, and environmental law and gas specific content.

Designed to provide knowledge, understanding and behavioural awareness, individuals must complete all nine modules and pass the assessment to gain EUSR SHEA Gas registration.

PLEASE NOTE - All EUSR SHEA training courses are an Energy & Utility Skills Passport scheme that does not indicate any level of technical competence or skilled expertise.

All courses are appropriate for operatives, supervisors & managers.

Please note - Prices are reviewed every six months and group discounts are available, please contact us to discuss.

EUSR SHEA CORE



● ● ● **DURATION — 1 DAY AVAILABLE IN-PERSON OR VIA REMOTE LEARNING**

Our SHEA Core scheme is designed for individuals who require access to operational sites within the power industry, both permanent and temporary.

Partnered with Construction Skills Certification Scheme (CSCS), our course comprises of six modules including utility specific, health, safety and environmental law.

Designed to provide knowledge, understanding and behavioural awareness, individuals must complete all six modules and pass the assessment to gain EUSR SHEA Core registration.

NATIONAL WATER HYGIENE



● ● ● **DURATION — 1 DAY AVAILABLE IN-PERSON OR VIA REMOTE LEARNING**

Our National Water Hygiene ('Blue Card') scheme plays a vital part in ensuring the protection of public health and promoting good water hygiene practices.

All UK water companies require individuals entering clean water sites or working on the clean water network – known as 'Restricted Operations', to hold a National Water Hygiene EUSR registration. 'Restricted Operations' includes working on service reservoirs, water pumping stations, water treatment works, wells, springs, boreholes as well as working on the network of water mains and service pipes.

It's not just water company employees. If you are working on a 'Restricted Operation' on behalf of a water company subcontractor or other organisation, such as Self-Lay Organisation (SLOs) – then you need a National Water Hygiene EUSR registration.

There are four modules:

- Module 1: The importance of water
- Module 2: Water as a carrier of disease
- Module 3: Potential contamination and its consequences
- Module 4: Preventing contamination

Please note - Prices are reviewed every six months and group discounts are available, please contact us to discuss.

ENDORSED TRAINING PROGRAMMES / EUSR SCHEMES

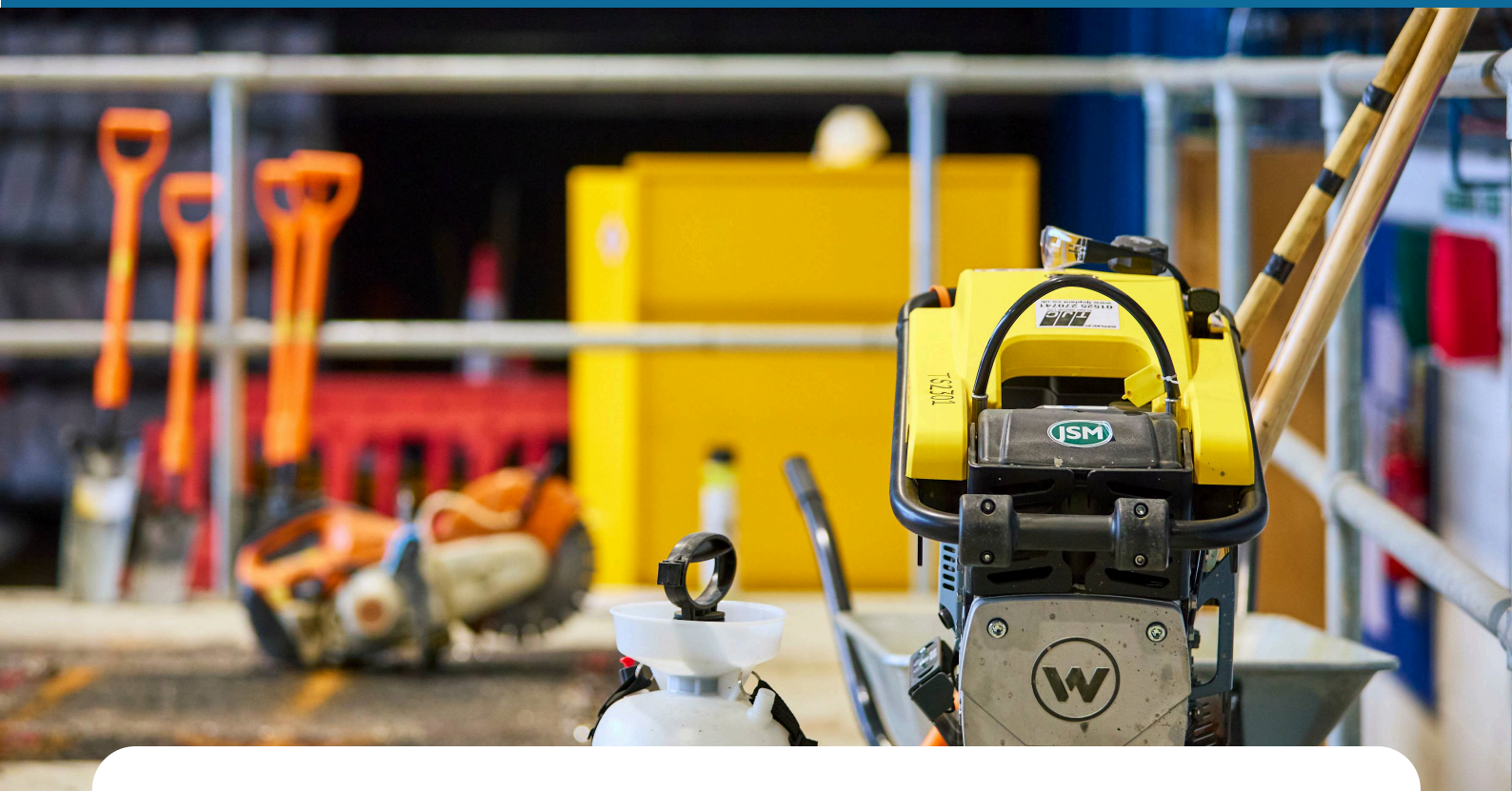


Courses that JSM Group Services offer under Endorsed Training Programmes:

- Asbestos Awareness scheme
- Manual Handling scheme
- Abrasive Wheels (Petrol Cutting Saw)
- Fire Warden
- Traffic Marshall & Bankman Training
- Face Fit Test
- Utility Excavations CAT 1 & 2
- Working at Height & Ladder Awareness
- Automated External Defibrillator

Please note - Prices are reviewed every six months and group discounts are available, please contact us to discuss.

NATIONAL PLANT OPERATOR REGISTRATION SCHEME (NPORS)



NPORS provide JSM Group Services the ability and flexibility to train your operatives at your location.

Courses that JSM Group Services offer under NPORS:

- Abrasive wheels / Handheld & Petrol cutting saw
- Mobile Elevated Work Platform (MEWP) Scissor lift
- Excavator as a crane
- Plant Mover
- Excavator Micro (up to 1 ton)
- Quick Hitch awareness
- Excavator tracked above and below 10 ton
- Ride on Roller
- Forward Tipping Mini Dumper
- Safety awareness
- Harness and fall arrest Course
- Slinger signaller
- Industrial counterbalance Lift truck
- Telescopic Handler all sizes (excluding slew)
- Mobile Elevated Work Platform (MEWP) Boom
- Telescopic handler suspended loads

Please note - Prices are reviewed every six months and group discounts are available, please contact us to discuss.

NUCO TRAINING



Nuco provide JSM Group Services the ability and flexibility to train your operatives at your location.

Courses that JSM Group Services offer under Nuno training:

- Emergency First Aid at Work - 1 Day
- First Aid at Work - 3 Days
- First Aid at Work - 2 Days requalification

A range of subjects are covered including:

- | | |
|-----------------------------------|---|
| ● Responsibilities and reporting | ● Dealing with an unresponsive casualty |
| ● Resuscitation and AED awareness | ● Minor injuries |
| ● Burns | ● Epilepsy |
| ● Assessment of the situation | ● Basic hygiene in First Aid |
| ● Anatomy | ● Bleeding control |
| ● Choking | ● Shock |

Please note - Prices are reviewed every six months and group discounts are available, please contact us to discuss.

EUSR SHEA TELECOMMUNICATIONS



● ● ● DURATION — HALF DAY

On successful completion of the course, delegates will have an understanding of:

- How to assess and determine when it's right to use a ladder or stepladder
- How to select and safely use ladders & stepladders
- The law and standards relating to ladders & stepladders
- Hazards in the use of ladders & stepladders
- Safe storage & handling of ladders & stepladders
- Current Legislation, Regulations & Guidance
- Roles & Responsibilities of Employers & Employees
- Equipment - Leaning Ladders, Stepladders & Combination Ladders
- Site > Task > Equipment > People
- Pre-Use Checks

LADDERS & STEPLADDERS INSPECTION



● ● ● DURATION — HALF DAY

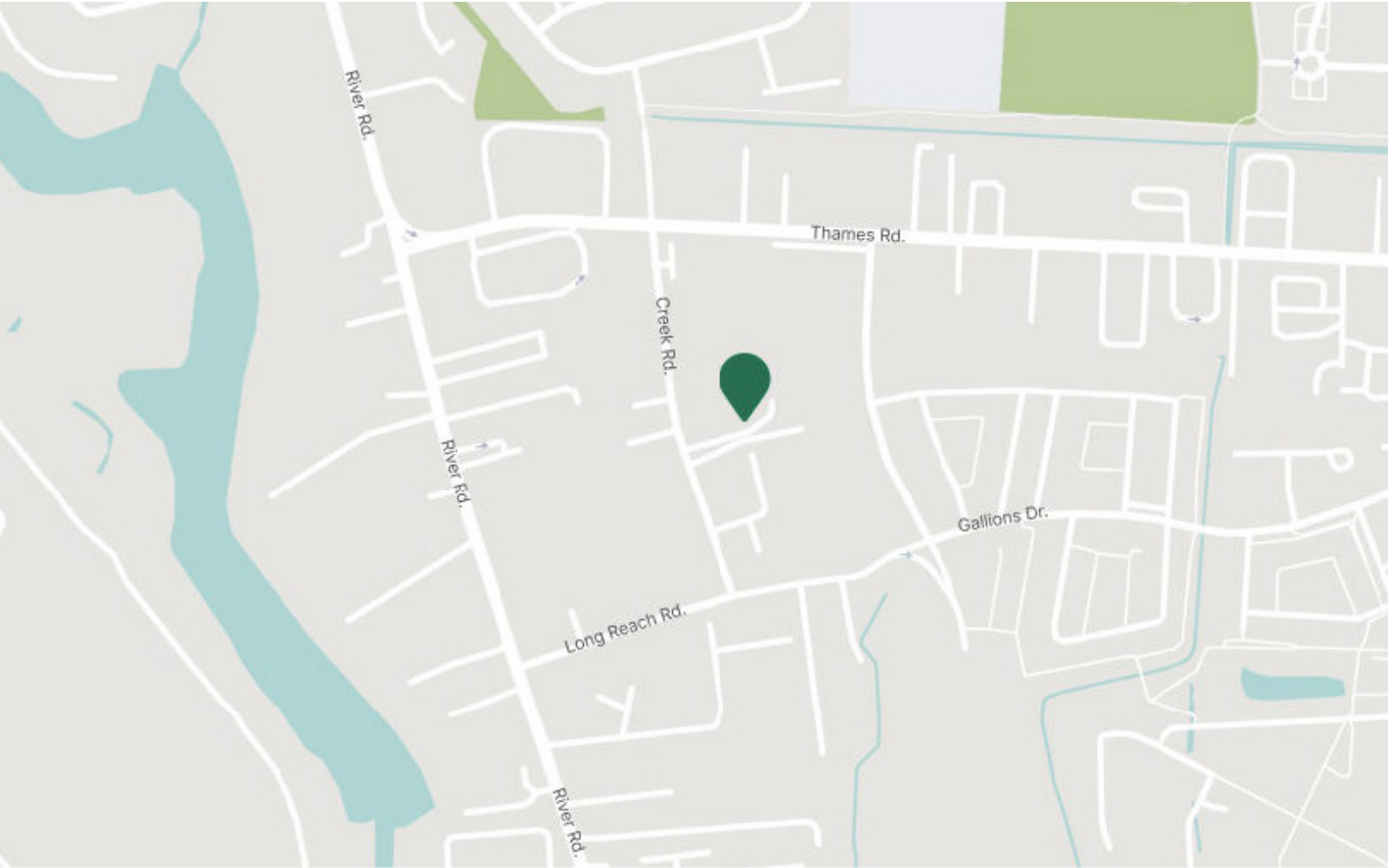
This course is designed for any person whose duty it is to inspect and maintain ladders at work.

Delegates will learn about:

- Current Legislation, Regulations & Guidance
 - Roles & Responsibilities of Employers & Employees
 - Pre-Use Checks
 - Formal Inspections of Ladders & Stepladders
 - Inspection Procedure
 - Carrying Out an Inspection
 - Frequency of Inspections
 - Recording Inspections
 - Advice on Repairs & Disposal Procedures
 - Personal Hazards
- Key Competencies:
- What to look AT
 - What to look FOR
 - What to do if you FIND a FAULT

Please note the above can be completed as a 1 day Ladder & Stepladders User & Inspection course. **Please note** - Prices are reviewed every six months and group discounts are available, please contact us to discuss.

CONTACT US



Email us - training@jsmgroup.com

Call us - 01992 257681

Find us - 19 Creek Road, Barking, London, IG11 0JH